

POWERSUPPLIES



USP-150, Switching powersupply, 150W

- Wide input voltage range up to 295VAC
- U-bracket 33mm low profile
- PFC, Power factor correction
- Free air convection 150W
- 3 years warranty

Technical data:

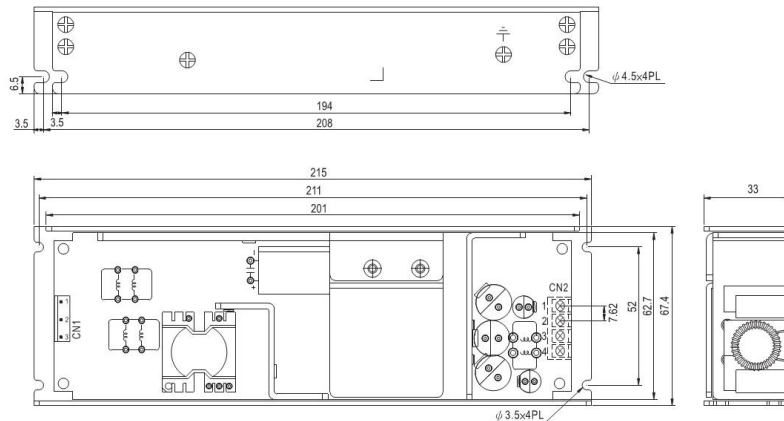
Input:

Input voltage:	90-295VAC / 127-417VDC
Frequency:	47-63 Hz
Input current at 230VAC:	1A
Inrush current at 230VAC:	65A

Output:

Output voltage:	See table
Output current:	See table
Adjustable output voltage:	+/-10%
Overload protection:	110-160% hiccup mode, auto-recovery
Over voltage protection:	110-135% of rated output voltage
Line regulation:	+/-0.5%
Load regulation:	+/-1%
Ripple:	100-250mVp-p depending of model
Efficiency:	91.5-93% depending of model
Temperature range:	-30°C...+65, derating depending of model
Connection:	JST SVH-21T-P1 and screw terminal
Size:	215x67.4x33mm
Weight:	0.48kg
Safety:	UL/CE

Mechanical drawing and connection:



AC Input Connector (CN1) :SVH-21T-P1.1 or equivalent

Pin No.	Assignment	Mating Housing	Terminal
1	FG \perp	JST VHR or equivalent	JST SVH-21T-P1.1 or equivalent
2	AC/L		
3	AC/N		

DC Terminal pin NO. Assignment (CN2)

Pin No.	Assignment	Terminal
1,2	V-	DECA
3,4	V+	T21-BM10-04

Ordering information:

Type	Power	Output voltage	Output current
USP-150-12	150W	12VDC	12.5A
USP-150-15	150W	15VDC	10A
USP-150-24	151.2W	24VDC	6.3A
USP-150-36	151.2W	36VDC	4.2A
USP-150-48	153.6W	48VDC	3.2A