

MOTOR

Induction motor with spur gearbox, 25W

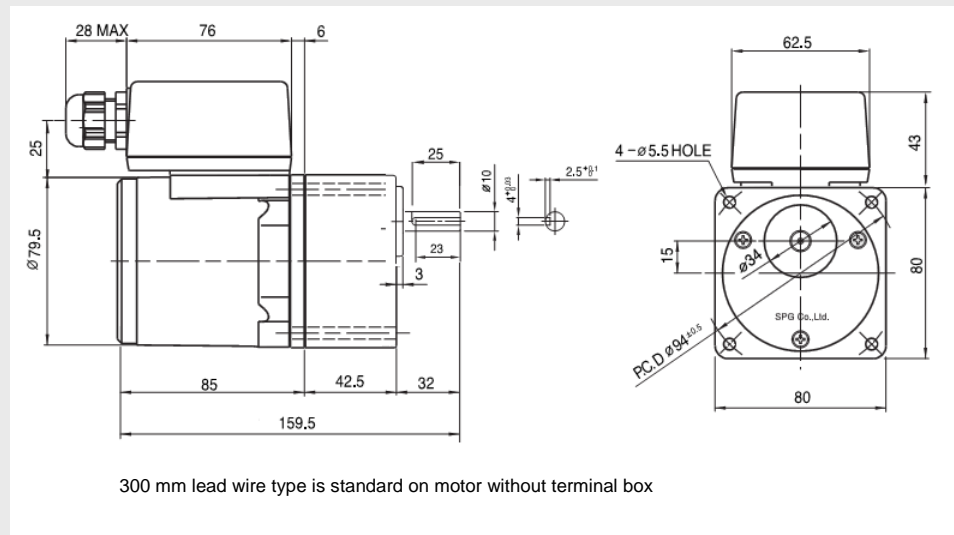


- Built-in thermal protection
- Low noise
- Maintenance – free gearbox
- Tacho and brake option

Technical data:

Voltage:	115... 400 VAC / 50 - 60 Hz
Output power:	25 W
Rated torque:	16 - 22 Ncm
Motor speed:	1200 - 1600 rpm
Output speed:	7,5 – 500 rpm
Current:	0,12 - 0,59 A
IP protection:	IP 54 with terminal box, IP23 with lead wire type
Approvals:	CE, CCC and UL at 115 VAC

Dimensions:



Order information motor:

Article no	Type
S8I25GXCE	Induction motor, 230 VAC with lead wire
S8I25GX-TCE	Induction motor, 230 VAC with terminal box
S8I25GT-TCE	Induction motor, 3-phase 230 VAC with terminal box
S8I25GS-TCE	Induction motor, 400 VAC with terminal box
S8I25GX-S12CE	Speed control motor, 230 VAC with tacho
S8R25GX-TCE	Reversible motor, 230 VAC with terminal box

Order information gearbox:

Article no	Max torque at continuous operation Nm	Output speed rpm
S8KA12.5B	2.18	120
S8KA18B	3.14	83
S8KA25B	3.94	60
S8KA36B	5.66	41
S8KA75B	7.84	20
S8KA100B	7.84	15
S8KA180B	7.84	8

Motor and gear is delivered separately. More models are available in standard program, contact us for information.