

POWERSUPPLIES



RS-35, Switching powersupply, 35W

- Wide input voltage range
- LED indication for power on
- International safety approvals
- 3 years warranty

Technical data:

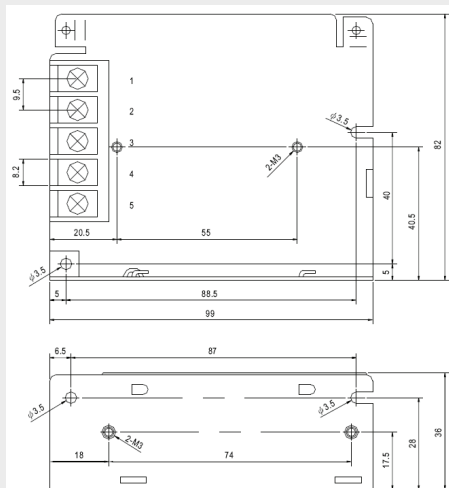
Input:

| | |
|---------------------------|------------------------|
| Input voltage: | 88-264VAC / 125-373VDC |
| Frequency: | 47-63 Hz |
| Input current at 230VAC: | 0.55A |
| Inrush current at 230VAC: | 36A |

Output:

| | |
|------------------------------|-------------------------------------|
| Output voltage: | See below table |
| Output current: | See below table |
| Adjustable output voltage: | +/-10% |
| Overload protection: | 110-150% hiccup mode, auto-recovery |
| Over voltage protection: | 115-135% rated output voltage |
| Line regulation 88-264V: | +/-0.5% |
| Load regulation 0-100% load: | +/-0.5-2% |
| Ripple & noise: | 80-200mA depends of model |
| Efficiency: | 73-84% |
| Temperature range: | -25°C...+50°C@100%, +70°C@50% |
| Connection: | Screw terminals |
| Size: | 99x82x36 mm |
| Weight: | 300g |
| Safety and EMC: | UL/TÜV/CE/CB |

Mechanical drawing:



Terminal Pin. No Assignment

| Pin No. | Assignment | Pin No. | Assignment |
|---------|------------|---------|--------------|
| 1 | AC/L | 4 | DC OUTPUT -V |
| 2 | AC/N | 5 | DC OUTPUT +V |
| 3 | FG \perp | | |

Ordering information:

| Type | Power | Output voltage | Output current |
|-----------|-------|----------------|----------------|
| RS-35-3.3 | 23.1W | 3.3VDC | 7A |
| RS-35-5 | 35W | 5VDC | 7A |
| RS-35-12 | 36W | 12VDC | 3A |
| RS-35-15 | 36W | 15VDC | 2.4A |
| RS-35-24 | 36W | 24VDC | 1.5A |
| RS-35-48 | 38.4W | 48VDC | 0.8A |