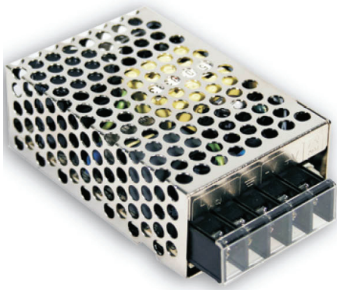


POWERSUPPLIES



RS-25, Switching powersupply, 25W

- Wide input voltage range
- LED indication for power on
- International safety approvals
- 3 years warranty

Technical data:

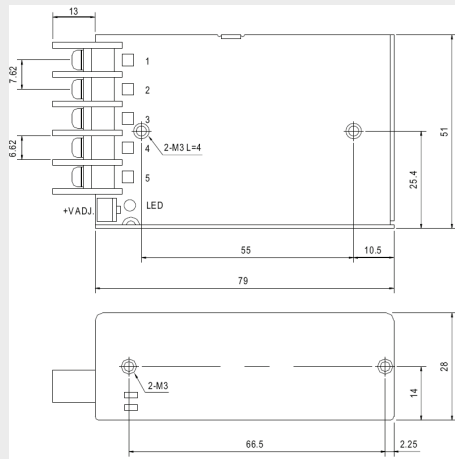
Input:

Input voltage: 88-264VAC / 125-373VDC
 Frequency: 47-63 Hz
 Input current at 230VAC: 0.4A
 Inrush current at 230VAC: 30A

Output:

Output voltage: See below table
 Output current: See below table
 Adjustable output voltage: +/-10%
 Overload protection: 110-180% hiccup mode, auto-recovery
 Over voltage protection: 115-135% rated output voltage
 Line regulation 88-264V: +/-0.5%
 Load regulation 0-100% load: +/-0.5-2%
 Ripple & noise: 80-200mA depends of model
 Efficiency: 72-85%
 Temperature range: -20°C...+50°C@100%, +70°C@60%
 Connection: Screw terminals
 Size: 79x51x28 mm
 Weight: 200g
 Safety and EMC: UL/TÜV/CE/CB

Mechanical drawing:



Terminal Pin. No Assignment

Pin No.	Assignment	Pin No.	Assignment
1	AC/L	4	DC OUTPUT -V
2	AC/N	5	DC OUTPUT +V
3	FG \perp		

Ordering information:

Type	Power	Output voltage	Output current
RS-25-3.3	19.8W	3.3VDC	6A
RS-25-5	25W	5VDC	5A
RS-25-12	25W	12VDC	2.1A
RS-25-15	25W	15VDC	1.7A
RS-25-24	26.4W	24VDC	1.1A
RS-25-48	27.3W	48VDC	0.57A